

PHOTOVOLTAIC FAÇADE

NEW CONSTRUCTION

The Children's Hospital at Westmead, the largest pediatric center in New South Wales, provides clinical services and quality care to 90,000 sick and injured children annually. It offers specialized care in a positive and healing environment for children from New South Wales, Australia, and across the Pacific.

The north façade of the new Multi Story Car Park features **90 units of terracotta-colored crystalline PV glass**, each measuring 2700 x 975 mm.

This custom-designed glass enhances both the aesthetics and functionality of the building, contributing to the **hospital's sustainability and energy efficiency**.

CCG Architects Pty Ltd and **Kane Constructions Pty Ltd** have been responsible for executing this project that challenges the traditional trajectory of carpark design.

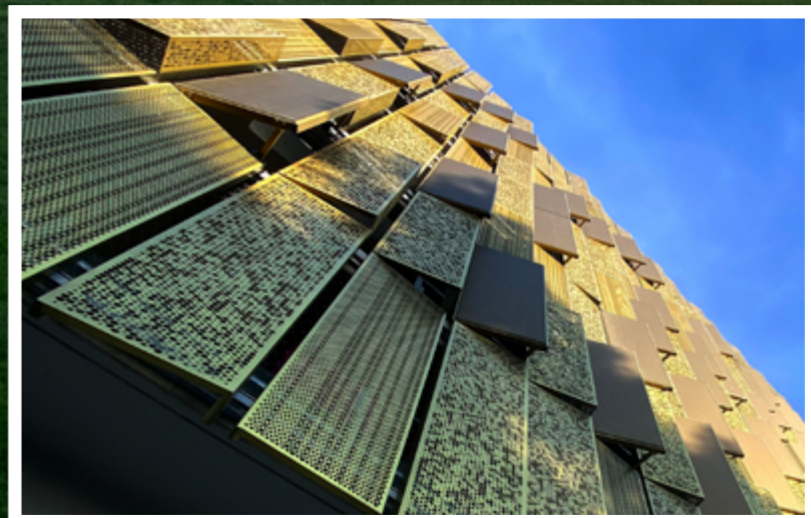
This new parking facility offers over 1,000 parking spaces for staff and 75 charging stations for electric vehicles.



WESTMEAD CAR PARK
 SYDNEY, AUSTRALIA

FAÇADE

CRYSTALLINE SILICON TECHNOLOGY



TECHNICAL DATA

Nominal Power (Wp/m ²)	123 Wp/m ²
Visible Light Transmittance (VLT)	0%
Solar Factor (g-value)	0%
U value (W/m ² K)	N/A
U value (Btu/h ft ² °F)	N/A



TECHNICAL DATA SHEET



BACK TO START

