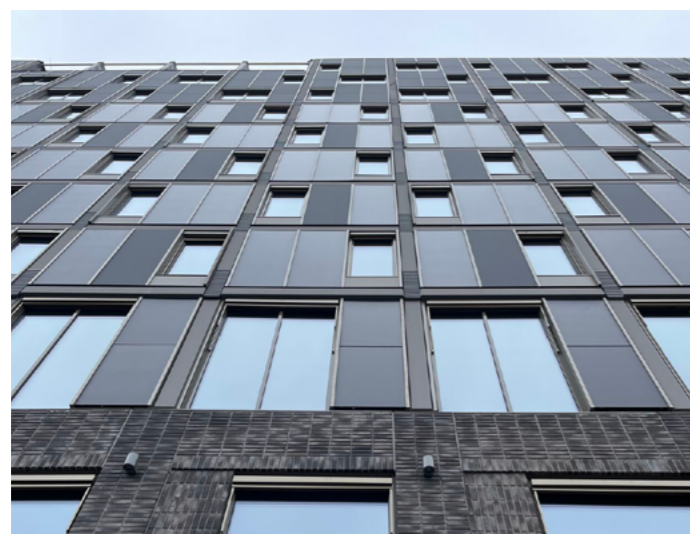


PHOTOVOLTAIC SKYLIGHT RENOVATION

The photovoltaic glass installed in the Ancona court incorporates **5BB crystalline silicon** cells with an **acid etch finish**.

With the aim of providing optimal insulation, the glass includes a **16mm argon chamber**. In addition, the cell density chosen by the customer allows the glass to reach a nominal power of **131 Wp/m²** while allowing **natural light** to enter.

All this allows the building to save a significant amount of energy and reduce its carbon footprint without sacrificing the comfort of its users.



TECHNICAL DATA

Nominal Power (Wp/m ²)	131 Wp/m ²
Visible Light Transmittance (VLT)	23%
Solar Factor (g-value)	16%
U value (W/m ² K)	1.70
U value (Btu/h ft ² °F)	0,29
Light Reflection (external)	8%



TECHNICAL DATA SHEET



ANCONA COURT
ANCONA, ITALY

SKYLIGHT

CRYSTALLINE SILICON TECHNOLOGY

