

## WALKABLE PV FLOOR UNDER CONSTRUCTION

Located near the Empire State Building in New York, 6th Avenue is an innovative photovoltaic installation that **combines solar technology with natural design**.

The project, executed by Platío Solar Deck, **includes 240 photovoltaic** tiles forming a solar pavement that generates clean energy. Alongside this photovoltaic surface, there is also a wooden deck that enhances the aesthetic of the space.

Additionally, **the area is complemented by a green roof**, which contributes to sustainability.

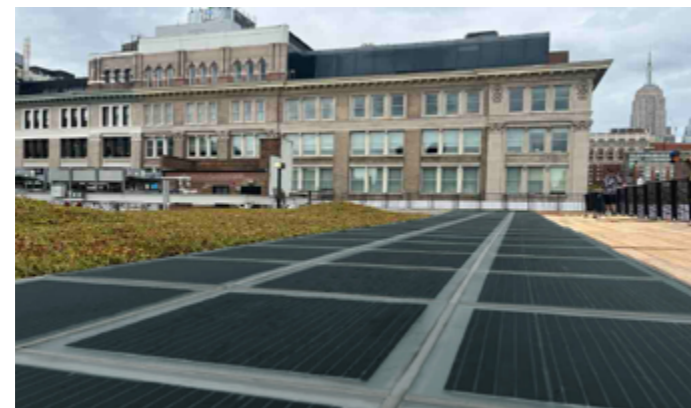
By combining solar technology, natural materials, and vegetation, 6th Avenue stands as a remarkable example of renewable energy integration in New York's urban landscape.

BACK TO START ▲

Nominal Power (Wp/m <sup>2</sup> )	133 Wp/m <sup>2</sup>
Visible Light Transmittance (VLT)	28%
Solar Factor (g-value)	0.21
U value (W/m <sup>2</sup> K)	5.2
U value (Btu/h ft <sup>2</sup> °F)	0,91
Light Reflection (external)	<6%



TECHNICAL DATA SHEET



**6TH AVENUE**  
NUEVA YORK, UNITED STATES

**WALKABLE PV FLOOR**  
CRYSTALLINE SILICON TECHNOLOGY

