

# PHOTOVOLTAIC BRISE SOLEIL

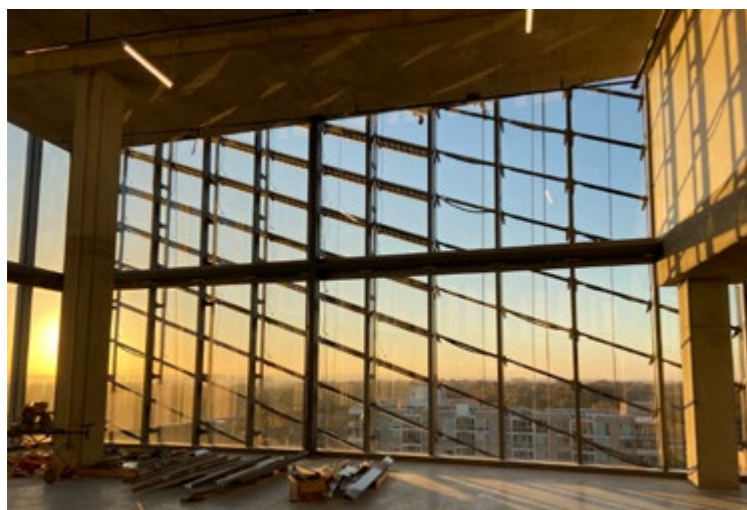
## UNDER CONSTRUCTION

Photovoltaic glass sunshades are now enhancing **George Mason University's** new Institute for Digital Innovation (IDIA) at Mason Square in Arlington.

This cutting-edge installation integrates over **340 crystalline silicon units** into the building's design, contributing to **onsite renewable energy generation** while significantly **reducing CO<sub>2</sub> emissions**.

Featuring a distinctive **trapezoidal design**, these sunshades are installed diagonally to form a functional screen that seamlessly **combines shading with clean power generation**. It's a perfect blend of **aesthetic appeal and sustainability**.

We are proud to collaborate with **Service Glass Industries** and **Clark Construction Group** on this project and extend our gratitude to **Page Architects** for their visionary leadership in sustainable and innovative design.



### TECHNICAL DATA

Nominal Power (Wp/m <sup>2</sup> )	138 Wp/m <sup>2</sup>
Visible Light Transmittance (VLT)	28%
Solar Factor (g-value)	32%
U value (W/m <sup>2</sup> K)	N/A
U value (Btu/h ft <sup>2</sup> °F)	0.92
Light Reflection (external)	8%



TECHNICAL DATA SHEET



MORE INFO IN VIDEO



**GEORGE MASON UNIVERSITY**

VIRGINIA, USA

**BRISE SOLEIL - FINS**

CRYSTALLINE SILICON TECHNOLOGY



**Page/**

**CLARK**  
CONSTRUCTION